



Section M
Dry Pipe Systems

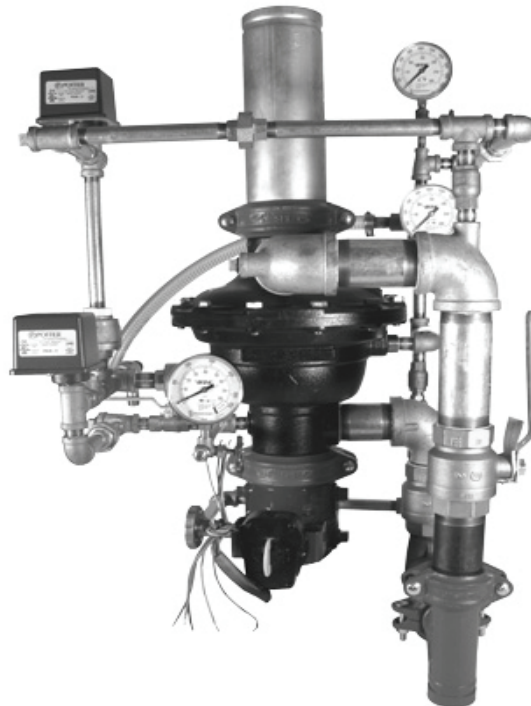
TABLE OF CONTENTS

Dry Pipe System (Model G) M-1
Dry Pipe System (Model F)..... M-2
Accelerators / Air Maintenance Devices M-3
Accessories and Components M-4

Notes

1. Refer to Viking technical data pages for complete product specifications. You may print or download technical data by visiting www.vikinggroupinc.com.
2. List prices effective May 3, 2010. Supersedes September 2008 list price book.
3. All sales by Viking are subject to the terms & conditions found on the last page of this book.

Model G Dry System (Pre-Assembled)



Model G Dry System	
<i>Complete, pre-assembled dry valve and trim includes the following:</i>	
<ul style="list-style-type: none"> - Model G Dry Valve - Model G Trim Package - Water Supply Control Valve - Air Pressure Supervisory Switch (PS40-2A) - Alarm Pressure Switch (PS10-1A) - 12" (0,3 m) Section of Galvanized Schedule 10 Pipe (with Coupling) 	

Model	Size	Part Number	List Price	Item Price Group
G-2000	2"	16149-1	\$5,650.04	V26.1E
G-3000	3"	16150-1	\$6,200.75	V26.1E
G-4000	4"	15647-1	\$6,629.69	V26.1E

G-4000 (4") also available without control valve and switches:

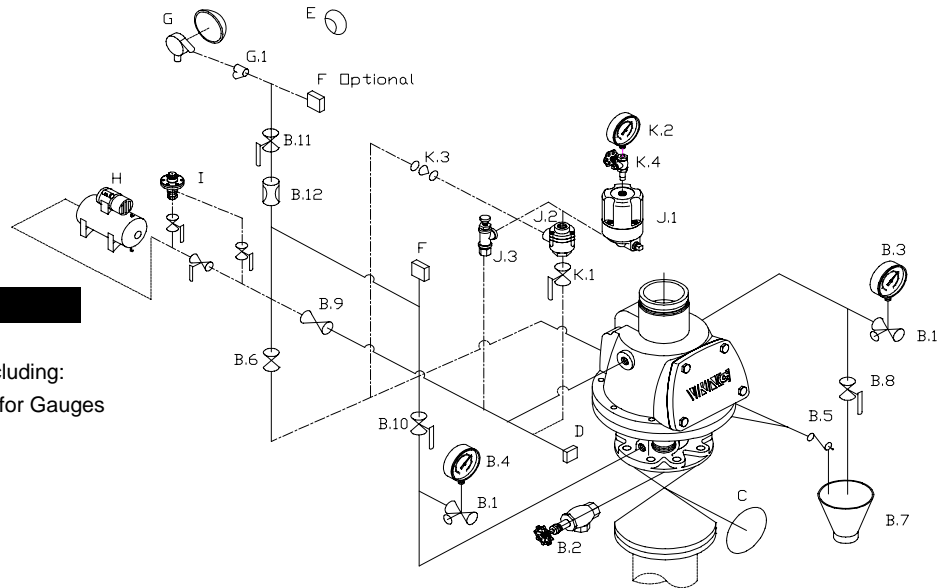
Model	Size	Part Number	List Price	Item Price Group
G-4000 (basic)	4"	15589-1	\$4,680.77	V26.1E

Model G Dry System - Optional Drain Manifold Assembly

Model	Size	Part Number	List Price	Item Price Group
G-2000	2"	16211	\$308.86	V26.1E
G-3000	3"	16212	\$397.32	V26.1E
G-4000	4"	15588	\$445.75	V26.1E

(1) Refer to Viking technical data page "Dry 119a-I" for complete product specifications and system schematics
 (2) See page M-2 for Viking's Model F dry valve and trim.
 (3) Model G valve also available in pre-action arrangement. See section O for details.

Model F-1 Dry System



Description

- A Model F-1 Dry Pipe Valve
- B Model F-1 Dry Valve Trim including:
 - B.1 Side Outlet Globe Valve for Gauges
 - B.2 Angle Valve
 - B.3 Air Gauge
 - B.4 Water Gauge
 - B.5 Drip Check Valve
 - B.6 Drain Check Valve
 - B.7 Drain Cup
 - B.8 Priming Water Test Valve
 - B.9 1/2" / DN15 Spring Loaded Check Valve
 - B.10 Alarm Test Valve
 - B.11 Alarm Shut-Off Valve
 - B.12 7/32" / 5mm Restricted Orifice
- C Water Supply Control Valve
- D Air Pressure Supervisory Switch
- E Electric Alarm Bell
- F Alarm Pressure Switch
- G Model F-2 Water Motor Alarm (inc G.1 Y-strainer)
- H Maintenance Air Compressor

Description (continued)

- I Model D-2 Air Maintenance Device and Trim
- J Accelerator / Anti-Flood Package including:
 - J.1 Model E-1 Accelerator
 - J.2 Model B-1 Anti-Flood Device
 - J.3 Model B-1 Float Check Valve Assembly
- K Accelerator / Anti-Flood Trim including:
 - K.1 1/2" / DN15 Anti-Flood Isolation Valve
 - K.2 Air Gauge
 - K.3 1/2" / DN15 Swing Check Valve
 - K.4 Side Outlet Valve for Accelerator Gauge

* Trims include indented items immediately following.

Flange / Flange (Model F-1) Dry Valve					
Size	Valve (only)	Loose Trim ¹ (galvanized)	Modular Trim ¹ (galvanized)	Valve/Trim (pre-trimmed)	
IPG	V26.1	V26.1A	V26.1C	V26.1D	
3"	09441 - \$2,809.47	10158 - \$1,093.15	10158P - \$1,293.15	09441PT - \$4,093.25	
4"	07628 - \$3,148.80	08395 - \$1,116.92	08395P - \$1,316.92	07628PT - \$4,520.73	
6"	08464 - \$3,937.04	09456 - \$1,116.92	09456P - \$1,316.92	08464PT - \$5,308.96	
Flange / Groove (Model F-1) Dry Valve					
Size	Valve (only)	Loose Trim ¹ (galvanized)	Modular Trim ¹ (galvanized)	Valve/Trim (pre-trimmed)	
IPG	V26.1	V26.1A	V26.1C	V26.1D	
3"	09446 - \$2,809.47	10158 - \$1,093.15	10158P - \$1,293.15	09446PT - \$4,157.61	
4"	07627 - \$3,148.80	08395 - \$1,116.92	08395P - \$1,316.92	07627PT - \$4,520.73	
6"	08491 - \$3,937.04	09456 - \$1,116.92	09456P - \$1,316.92	08491PT - \$5,308.96	
Groove / Groove (Model F-2) Dry Valve					
Size	Valve (only)	Loose Trim ¹ (galvanized)	Modular Trim ¹ (galvanized)	Valve/Trim (pre-trimmed)	
IPG	V26.1	V26.1A	V26.1C	V26.1D	
3"	13764 - \$2,809.47	10158 - \$1,093.15	10158P - \$1,293.15	13764PT - \$4,157.61	
4"	13765 - \$3,148.80	08395 - \$1,116.92	08395P - \$1,316.92	13765PT - \$4,520.73	
6"	13766 - \$3,937.04	09456 - \$1,116.92	09456P - \$1,316.92	13766PT - \$5,308.96	

(1) Trim includes dry valve accessory pkg (p/n 08397). See page M-4 for details.



Size	DOMESTIC TRIM ^{1,2} (galvanized)
IPG	V26.1A
3"	10158USA - \$1,561.63
4"	08395USA - \$1,595.61
6"	09456USA - \$1,595.61



(2) Meets sourcing requirements of the Buy American Act, American Reinvestment and Recovery Act, and Buy American Law.

* See page M-3 for accelerators and air maintenance devices. See page M-4 for additional accessories.

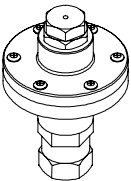

Accelerators / Air Maintenance Devices

Accelerator / Anti-Flood Packages (and Trim)


Accelerator (D-2) 		Accelerator Trim* (Model D-2) <i>(Galvanized)</i> 	
Model D-2	List Price	Model D-2	List Price
09881	\$1,186.96	09730	\$276.11
		DOMESTIC	
Model D-2	List Price	Model D-2	List Price
09730USA	\$368.15		
IPG V25.1		IPG V25.3A	

Accelerator (E-1) / Anti-Flood Device (B-1) 		Accelerator / Anti-Flood Trim (galvanized) <table border="1"> <thead> <tr> <th colspan="2">STANDARD</th> <th colspan="2">DOMESTIC</th> </tr> <tr> <th>Part #</th> <th>List Price</th> <th>Part #</th> <th>List Price</th> </tr> </thead> <tbody> <tr> <td>08264</td> <td>\$396.97</td> <td>08264USA</td> <td>\$529.29</td> </tr> </tbody> </table>		STANDARD		DOMESTIC		Part #	List Price	Part #	List Price	08264	\$396.97	08264USA	\$529.29
STANDARD		DOMESTIC													
Part #	List Price	Part #	List Price												
08264	\$396.97	08264USA	\$529.29												
	IPG V25.1														
<i>E-1 Accelerator (only)</i> 08055 \$988.77		Includes: - Air Gauge - ½" / 15mm Anti-Flood Isolation Vlv - ½" / 15mm Swing Check Valve - Nipples, Fittings, Plugs - Float Check Valve IPG V25.3A													
															
<i>B-1 Anti-Flood device (only)</i> 08061 \$570.09															
Accelerator/Anti-Flood Package 08116 \$1,170.56 <i>(include E-1 and B-1)</i>															
Use only with tank-mounted air compressor and listed air maintenance device		Use with Model-F dry valve, Model-F dry valve trims, accelerator/anti-flood package													

Air Maintenance Device (and trim) - IPG V25.1

Model D-2 - Air Pressure Maintenance Device 				Model D-2 - Air Pressure Maintenance Device 			
	Size	Part #	List Price		Size	Part #	List Price
	¼" / DN8	02280C	\$541.66		½" / DN15	07459	\$829.61
				DOMESTIC			
					Size	Part #	List Price
					½" / DN15	07459USA	\$1,106.14
IPG V25.1				IPG V25.1			
		Filter Kit		Part #	List Price		
		IPG V25		03007A	\$28.10		

Air Compressor - IPG V25.1

Model F-1 Maintenance Air Compressor <i>(includes mounting bracket)</i> 			
Model	HP	Part #	List Price
115VAC / 60 Hz <i>(14-60 PSI)</i>	¼ HP	11497	\$2,184.23
230VAC / 60 Hz	¼ HP	12629	\$2,184.23
110VAC / 50 Hz	¼ HP	12630	\$2,341.75
220V / 50 Hz	¼ HP	11498	\$2,341.75

Accessories (Included with standard dry valve trim)

Model G Optional Drain Manifold Assembly 				Dry Valve Accessory Package Includes: - Drip Check Valve - Drain Cup - Valve Reset Bar - 7/32" / 5mm Restricted Orifice - 1/2" / 15mm Spring Loaded Check Valve - 1/4" / 8mm Restricted Orifice - Tubing Connector																									
<table border="1"> <thead> <tr> <th>Model</th> <th>Size</th> <th>Part Number</th> <th>List Price</th> </tr> </thead> <tbody> <tr> <td>G-2000</td> <td>2"</td> <td>16211</td> <td>\$308.86</td> </tr> <tr> <td>G-3000</td> <td>3"</td> <td>16212</td> <td>\$397.32</td> </tr> <tr> <td>G-4000</td> <td>4"</td> <td>15588</td> <td>\$445.75</td> </tr> </tbody> </table>				Model	Size	Part Number	List Price	G-2000	2"	16211	\$308.86	G-3000	3"	16212	\$397.32	G-4000	4"	15588	\$445.75	<table border="1"> <thead> <tr> <th>Part Number</th> <th>List Price</th> </tr> </thead> <tbody> <tr> <td>08397</td> <td>\$389.90</td> </tr> </tbody> </table>		Part Number	List Price	08397	\$389.90	IPG V26.1E		IPG V26.B	
Model	Size	Part Number	List Price																										
G-2000	2"	16211	\$308.86																										
G-3000	3"	16212	\$397.32																										
G-4000	4"	15588	\$445.75																										
Part Number	List Price																												
08397	\$389.90																												
Water Gauge 0-300 psi (2,068 kPa) 1/4" / DN8 VWATERSF \$21.04 IPG V25.1		Air Gauge 0-80 psi (554 kPa) 1/4" / DN8 VAIRSF \$21.55 IPG V25.1		Globe Valve for Gauges (side outlet) 1/4" / DN8 76V-25 \$17.30 IPG V25.1																									
Alarm Test/Alarm Shut-Off Valve (1/2" Ball Valve) 1/2" / DN15 10355 \$33.94 IPG V25.1		Drain Cup 1 1/2" / DN40 01019B \$98.63 IPG V25.1		Drain Check Valve 1/2" / DN15 05781A \$62.17 IPG V25.1																									
Drip Check Valve - Model D-3 3/4" / DN20 10732 \$171.34 IPG V25.1		Valve Reset Bar 05883A \$34.31 IPG V25.1		Spring Loaded Check Valve (with viton disc) 1/2" / DN15 08431 \$43.78 IPG V25.1																									
Restricted Orifice 1/16" / 1.5mm 1/4" / DN8 10110 \$25.92 IPG V25.1		Restricted Orifice 7/32" / 5mm 1/2" / DN15 06980A \$18.34 IPG V25.1		Swing Check Valve 1/2" / DN15 03945A \$58.54 IPG V25.1																									
Angle Valve 1 1/2" / DN40 Use with 3" / DN80: 03937S - \$131.50 2" / DN50 Use with 4" / DN100: 03938S - \$175.95 Use with 6" / DN150: 03938S - \$175.95 IPG V25.1		Anti-Column Device (Model LD-1) 14800 \$317.74 *install in vertical position IPG V25.1 Install on dry systems where potential for water column exists downstream of dry valve		Anti-Column Device Trim 14816 \$121.62 IPG V25.1																									
Float Check Valve (Model B-1/B-2) <table border="1"> <thead> <tr> <th colspan="2">Brass - 1/2" / DN15 (B-1)</th> <th colspan="2">Corrosion Resistant (B-2)</th> </tr> </thead> <tbody> <tr> <td>12116</td> <td>\$205.41</td> <td>12084</td> <td>\$502.94</td> </tr> </tbody> </table> IPG V25.1						Brass - 1/2" / DN15 (B-1)		Corrosion Resistant (B-2)		12116	\$205.41	12084	\$502.94																
Brass - 1/2" / DN15 (B-1)		Corrosion Resistant (B-2)																											
12116	\$205.41	12084	\$502.94																										

Accessories (NOT included with standard dry valve trim)

Dry Valve Wrench 02977BM \$151.74 IPG V25.1		Glass Strut Head (for Model B-1 accelerator) 03226C \$42.20 IPG V25		Drip Check Valve (Model D-2) (for Model B-1 accelerator) 10731 \$173.68 IPG V25.1	
--	--	---	--	---	--

