



Section R
Foam Systems

TABLE OF CONTENTS

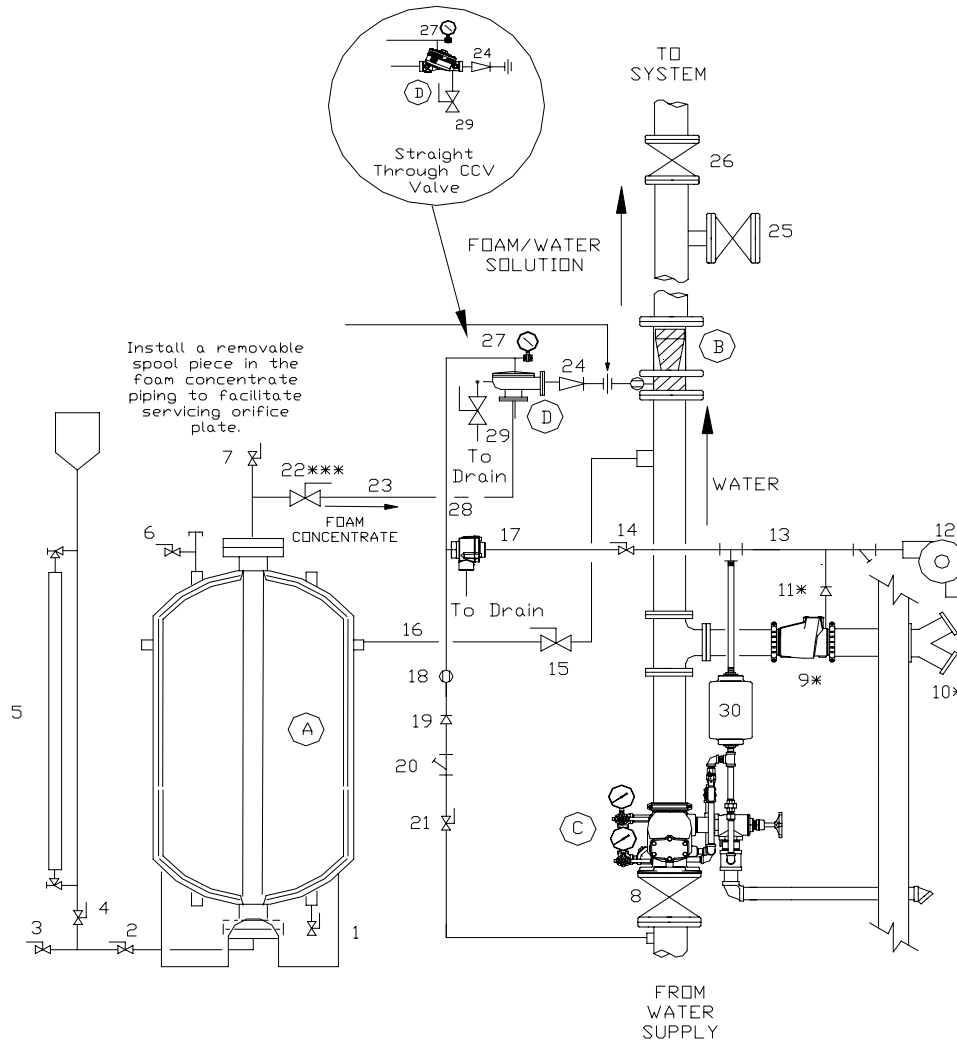
System Schematics	R-1 – R-6
Concentrate Control Valves and Trim	R-7
Valve Trim for Premixed Foam Systems	R-7
Release Trim Packages	R-7
Foam Concentrates	R-8
Accessories, Foam Concentrates.....	R-8 – R-9
Hi-Expansion Foam Generators	R-9
Bladder Tanks.....	R-10
Proportioning Devices.....	R-11 – R-12
Discharge Devices.....	R-13 – R-15
Atmospheric Storage Tanks.....	R-16
FOAMPAK® Foam Pump System.....	R-17 – R-18

Notes

1. Refer to Viking technical data pages for complete product specifications. You may print or download technical data by visiting www.vikinggroupinc.com.
2. List prices effective May 3, 2010. Supersedes September 2008 list price book.
3. All sales by Viking are subject to the terms & conditions found on the last page of this book.

FOAMPAK® is a registered trademark of The Viking Corporation

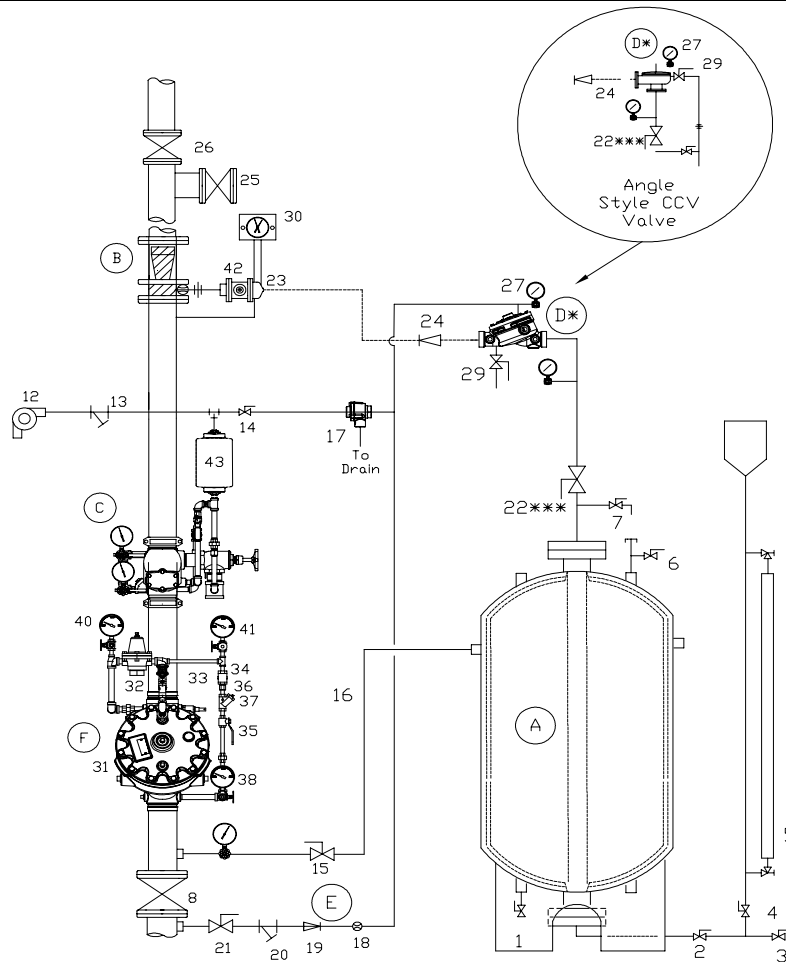
System Schematic - FOAM WET PIPE SYSTEM



DESCRIPTION	
A	Foam Concentrate Bladder Tank including:
1	Water Drain / Fill Valve
2	Fill Line Master Shut-Off Valve
3	Concentrate Drain / Fill Valve
4	Fill Cup / Sight Gauge Shut-Off Valve
5	Sight Gauge Assembly
6	Tank Water Vent Valve
7	Diaphragm Concentrate Vent Valve
B	Proportioning Concentrate Controller
C	Model J-1 Wet Pipe Alarm Valve and Trim
8	Water Supply Control Valve
12	Water Motor Alarm
D	Foam Concentrate Control Valve (Halar®) and Trim
14	1/2" / DN15 PORV Water Supply Ball Valve
	Concentrate Control Valve Priming Connection Pkg including:
17	Model D-1 Pressure Operated Relief Valve (PORV)
18	1/8" / 3mm Restricted Orifice
19	Soft Seat Check Valve

DESCRIPTION (cont.)	
20	1/2" / DN15 Y Strainer
21	1/2" / DN15 Ball Valve
27	Water Gauge
29	1/2" / DN15 Foam Concentrate Aux. Drain Valve
	Accessories
9	Check Valve (Optional)
10	Fire Department Connection (Optional)
11	1/2" / DN15 Soft Seat Check Valve (Optional)
13	Alarm Line Piping
15	Bladder Tank Water Supply Control Valve
16	Water Supply Piping to Bladder Tank
22	Foam Concentrate Shut-Off Valve
23	Foam Concentrate Discharge Piping
24	Foam Concentrate Swing Check Valve
25	Foam Solution Test Valve
26	System Isolation Valve
28	1/2" / DN15 Priming Line
30	Retard Chamber

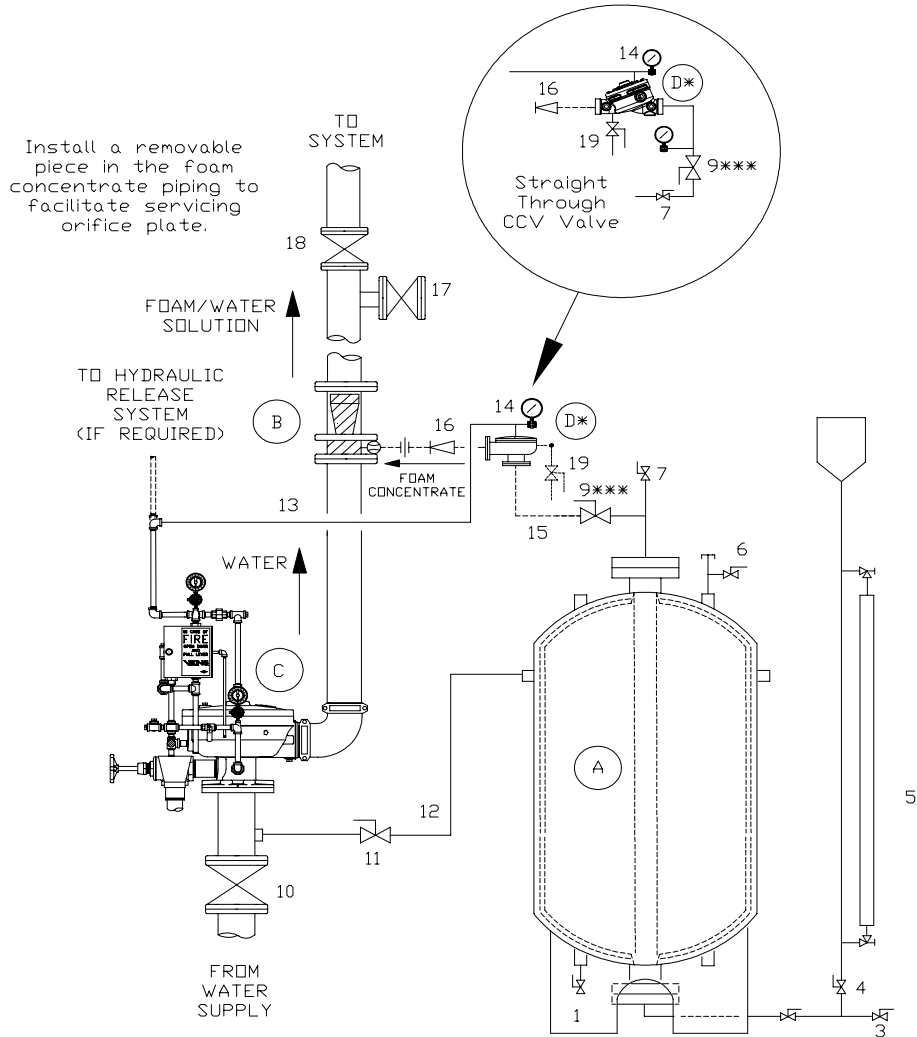
System Schematic - WET PIPE LOW FLOW FOAM SYSTEM



DESCRIPTION	
A	Foam Concentrate Bladder Tank including:
1	Water Drain / Fill Valve
2	Fill Line Master Shut-Off Valve
3	Concentrate Drain / Fill Valve
4	Fill Cup / Sight Gauge Shut-Off Valve
5	Sight Gauge Assembly
6	Tank Water Vent Valve
7	Diaphragm Concentrate Vent Valve
B	In-Line Balancing Proportioner (ILBP) Including:
24	Check Valve
30	Duplex Gauge
42	Spool Balancing Valve
C	Model J-1 Wet Pipe Alarm Valve and Trim
43	Retard Chamber
D	Foam Concentrate Control Valve (Halar®) and Trim
E	Concentrate Control Valve Priming Connection Pkg including:
17	Model D-1 Pressure Operated Relief Valve (PORV)
18	1/8" / 3mm Restricted Orifice
19	Soft Seat Check Valve
20	1/2" / DN15 Y Strainer
21	1/2" / DN15 Ball Valve
27	Water Gauge
29	1/2" / DN15 Foam Concentrate Aux. Drain Valve

DESCRIPTION (cont.)	
E	Model A-2 Pilot Operated Pressure Control Valve including:
31	Model H Flow Control Valve
32	Model C-2 Pilot Pressure Regulating Valve
33	Model A-1 Speed Control Assembly
34	Soft Seat Check Valve
35	1/2" / DN15 Ball Valve
36	1/8" / 3mm Restricted Orifice
37	1/2" / DN15 Y Strainer
38	Water Supply Pressure Gauge
39	Drain Valve
40	Air Bleed Valve and Pressure Gauge
41	Downstream Pressure Gauge
	Accessories
8	Water Supply Control Valve
12	Water Motor Alarm
13	Alarm Line Piping
14	1/2" / DN15 PORV Water Supply Ball Valve
15	Bladder Tank Water Supply Control Valve
16	Water Supply Piping to Bladder Tank
22	Foam Concentrate Control Shut-Off Valve
23	Foam Concentrate Discharge Piping
24	Foam Concentrate Swing Check Valve
25	Foam Solution Test Valve
26	System Isolation Valve
28	1/2" / DN15 Priming Line

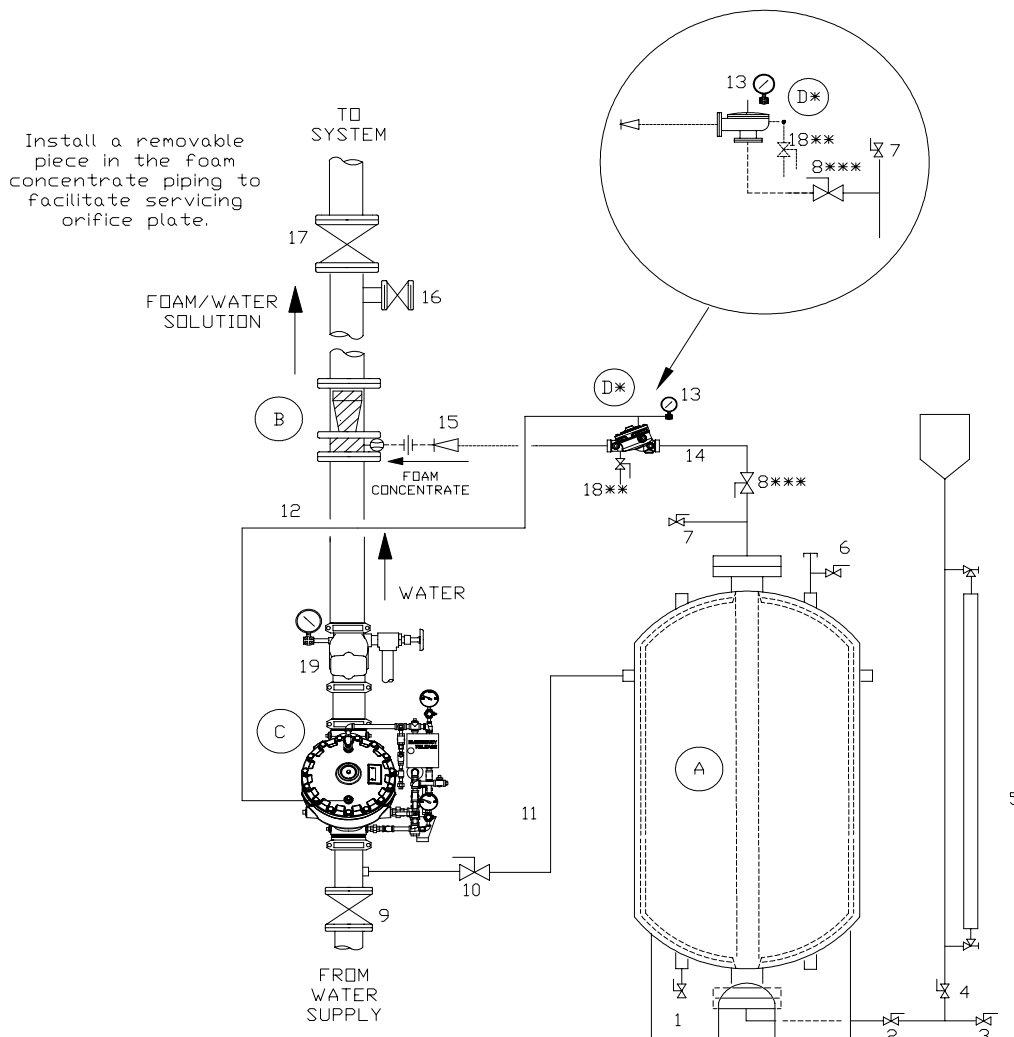
System Schematic - FOAM DELUGE SYSTEM



DESCRIPTION	
A	Foam Concentrate Bladder Tank including:
1	Water Drain / Fill Valve
2	Fill Line Master Shut-Off Valve
3	Concentrate Drain / Fill Valve
4	Fill Cup / Sight Gauge Shut-Off Valve
5	Sight Gauge Assembly
6	Tank Water Vent Valve
7	Hydrostatic Relief Valve
8	Diaphragm Concentrate Vent Valve
B	Proportioning Concentrate Controller
C	Model E Deluge Valve and Conventional Trim
10	Water Supply Control Valve

DESCRIPTION (cont.)	
D	Foam Concentrate Control Valve and Trim
14	Water Gauge
19	1/2" / DN15 Foam Concentrate Aux. Drain Valve (Opt.)
E	Accessory Trim
9	Foam Concentrate Control Shut-Off Valve
11	Bladder Tank Water Supply Control Valve
12	Water Supply Piping to Bladder Tank
13	Release Line / Priming Line Piping
15	Foam Concentrate Discharge Piping
16	Foam Concentrate Swing Check Valve
17	Foam Solution Test Valve
18	System Isolation Valve

System Schematic - FOAM PREACTION SYSTEM

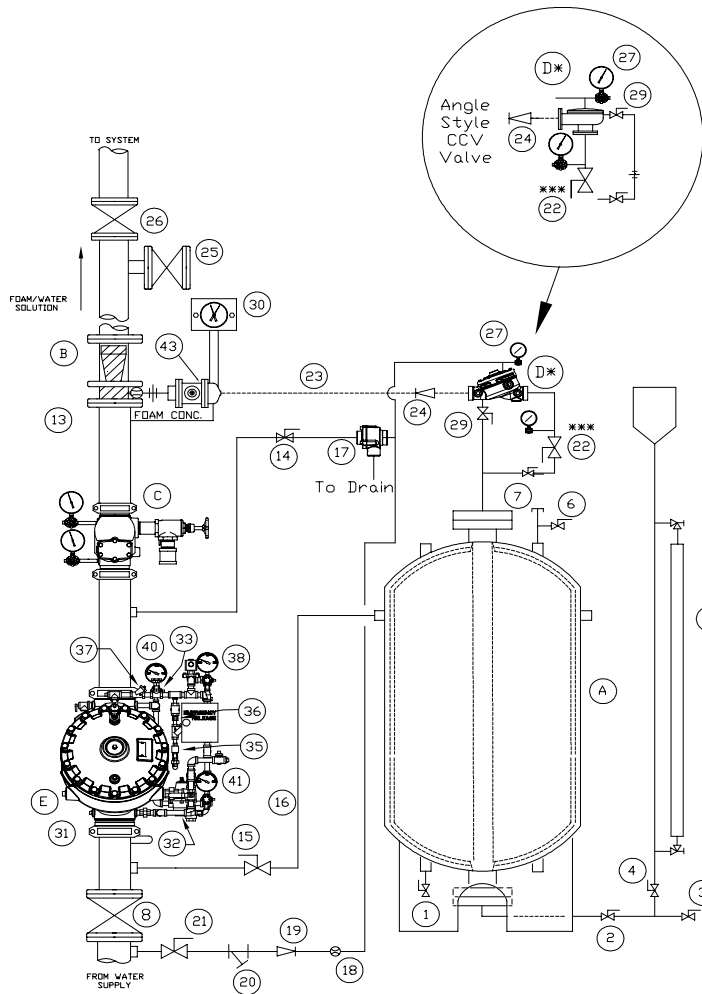


DESCRIPTION	
A	Foam Concentrate Bladder Tank including:
1	Water Drain / Fill Valve
2	Fill Line Master Shut-Off Valve
3	Concentrate Drain / Fill Valve
4	Fill Cup / Sight Gauge Shut-Off Valve
5	Sight Gauge Assembly
6	Tank Water Vent Valve
7	Diaphragm Concentrate Vent Valve
B	Proportioning Concentrate Controller
C	Model E Deluge Valve and Conventional Trim
9	Water Supply Control Valve
19	Easy Riser® Check Valve and Trim

DESCRIPTION (cont.)	
D	Foam Concentrate Control Valve and Trim
13	Water Pressure Gauge
E	Accessory Trim
8	Foam Concentrate Control Shut-Off Valve
10	Bladder Tank Water Supply Control Valve
11	Water Supply Piping to Bladder Tank
12	Release Line / Priming Line Piping
14	Foam Concentrate Discharge Piping
15	Foam Concentrate Swing Check Valve
16	Foam Solution Test Valve
17	System Isolation Valve
18	1/2" Foam Concentrate Auxiliary Drain Valve*

*only required on systems where concentrate controller (B) is installed below preaction valve (C).

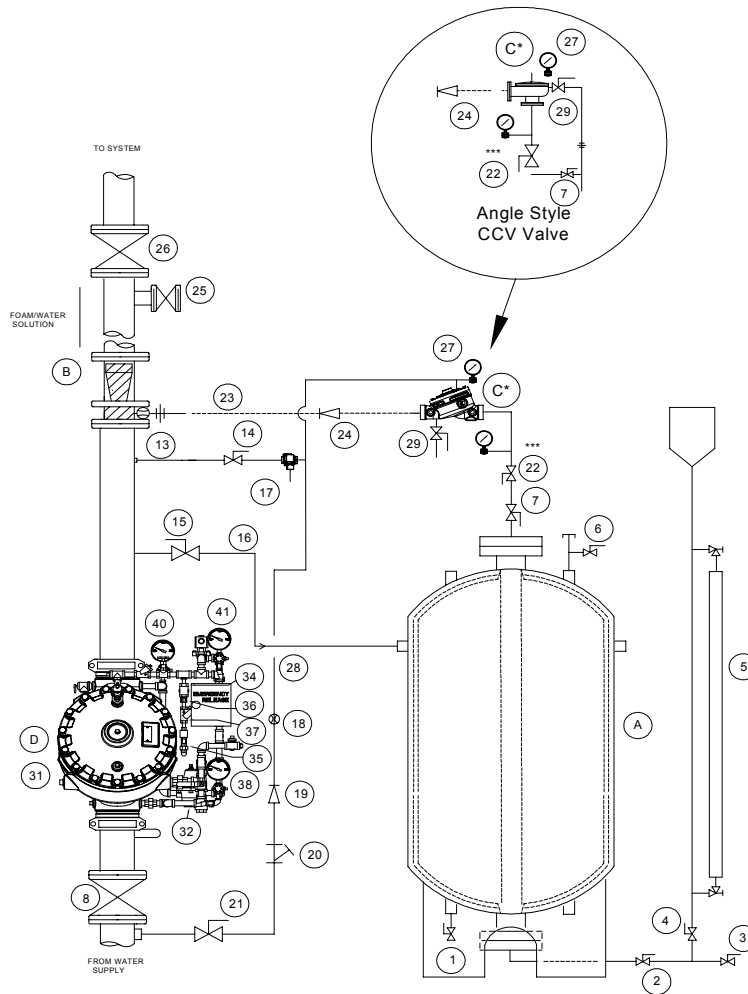
System Schematic - PREACTION LOW FLOW FOAM SYSTEM



DESCRIPTION	
A	Foam Concentrate Bladder Tank including:
1	Water Drain / Fill Valve
2	Fill Line Master Shut-Off Valve
3	Concentrate Drain / Fill Valve
4	Fill Cup / Sight Gauge Shut-Off Valve
5	Sight Gauge Assembly
6	Tank Water Vent Valve
7	Diaphragm Concentrate Vent Valve
B	In-Line Balancing Proportioner (ILBP) Including:
24	Check Valve
30	Duplex Gauge
43	Spool Balancing Valve
C	Easy Riser Check Valve
D	Foam Concentrate Control Valve and Trim
	Concentrate Control Valve Priming Connection Pkg Including:
17	Model D-1 Pressure Operated Relief Valve (PORV)
18	1/8" / 3mm Restricted Orifice
19	1/2" / DN15 Spring Loaded Check Valve
20	1/2" / DN15 Y Strainer
21	1/2" / DN15 Ball Valve
27	Water Gauge
29	1/2" / DN15 Foam Concentrate Aux. Drain Valve



DESCRIPTION (cont.)	
E	Model H Flow Control Valve with conventional deluge trim including:
31	Model H Flow Control Valve
32	Model C-2 Pilot Pressure Regulating Valve with Trim
33	Model A-1 Speed Control Assembly
34	Soft Seat Check Valve
35	1/2" / DN15 Ball Valve
36	1/8" / 3mm Restricted Orifice
37	1/2" / DN15 Y Strainer
38	Water Gauge
39	Drain Valve
40	Air Bleed Valve and Pressure Gauge
41	Downstream Pressure Gauge
42	Model C Emergency Release
	Accessories
8	Water Supply Control Valve
13	CCV Release Piping to PORV
14	1/2" / DN15 PORV Water Supply Ball Valve
15	Bladder Tank Water Supply Control Valve
16	Water Supply Piping to Bladder Tank
22	Foam Concentrate Control Shut-Off Valve
23	Foam Concentrate Discharge Piping
24	Foam Concentrate Swing Check Valve
25	Foam Solution Test Valve
26	System Isolation Valve

System Schematic - FOAM PILOT PRESSURE REGULATING SYSTEM

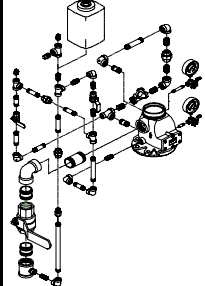
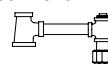
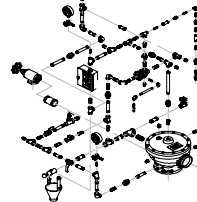
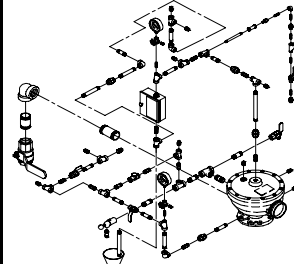


DESCRIPTION	
A	Foam Concentrate Bladder Tank including:
1	Water Drain / Fill Valve
2	Fill Line Master Shut-Off Valve
3	Concentrate Drain / Fill Valve
4	Fill Cup / Sight Gauge Shut-Off Valve
5	Sight Gauge Assembly
6	Tank Water Vent Valve
7	Diaphragm Concentrate Vent Valve
B	Concentrate Controller with Metering Orifice
23	Check Valve
C	Concentrate Control Valve (CCV) - Hydraulically Actuated
17	Model D-1 Pressure Operated Relief Valve (PORV)
18	Restricted Orifice .125"
19	1/2" Spring Loaded Check Valve
20	1/2" Strainer
21	1/2" Ball Valve (normally open)
27	Water Pressure Gauge
28	1/2" Priming Line
29	1/2" Foam Concentrate Auxiliary Drain Valve

DESCRIPTION (cont.)	
D	Pilot Pressure Regulating Deluge Valve
31	Viking Model H Flow Control Valve
32	Viking Model C-2 Pilot Pressure Regulating Valve
33	Viking Model B-2 Speed Control Valve
34	Check Valve
35	Priming Valve
36	Restricted Orifice
37	Strainer
38	Water Supply Pressure Gauge
39	Drain Valve
40	Air Bleed Valve and Pressure Gauge
41	Downstream Pressure Gauge
42	Emergency Release
E	Accessory Trim
8	Water Supply Control Valve
13	CCV Release Piping to PORV
14	1/2" PORV Water Supply Ball Valve
15	Tank Water Supply Control Valve
16	Water Supply Piping to Bladder Tank
22	Concentrate Control Shut-Off Valve
23	Foam Concentrate Discharge Piping
24	Foam Concentrate Swing Check Valve
25	Foam Solution Test Valve
26	System Isolation Valve

DESCRIPTION	NOMINAL SIZE	PART NUMBER	LIST PRICE (each)	
FOAM CONCENTRATE CONTROL VALVE Model E-2/E-4 Deluge Valve This valve is HALAR® coated for protection in corrosive environments and can be used with ARC or AFFF foam concentrates. Angle Style Threaded NPT  HALAR® Model & Pipe O.D. Model E-4 48mm Model E-2 60mm Straight Through Threaded NPT HALAR® Pipe O.D. NPT 65mm Groove/Groove  HALAR® Pipe O.D. Model F-2 48mm 60mm 73mm	1½" / DN40	09890Q/B	1,750.13	
	2" / DN50	08361Q/B	3,171.69	
	Model F-2 2½"	12402Q/B	4,190.23	
	Model F-2 1½" / DN40	12127Q/B	3,104.52	
	2" / DN50	12058Q/B	3,112.96	
	2½" / DN65	12404Q/B	4,190.23	
	Use with Model E/F Deluge Valve when used as a Concentrate Control Valve for either ARC or AFFF foam concentrates.			
	Use with Angle Style Valve			
	Galvanized 1½" / DN40	08098	225.38	
	2" / DN50	08099	517.26	
Use with Straight Through Valves				
Galvanized 1½" / DN40	12848-1	225.39		
2" / DN50	12848-1	225.39		
2½" / DN65	12929-1	517.26		
Brass 1½" / DN40	12848-2	312.71		
2" / DN50	12848-2	312.71		
2½" / DN65	12929-2	564.30		

V32.1A

DESCRIPTION	NOMINAL SIZE	PART NUMBER	LIST PRICE (each)
VALVE TRIM FOR PREMIXED FOAM SYSTEMS			
Model J-1 Alarm Valve Trim Variable Pressure V26.B  Vertical Horizontal Circuit Closer Vent Trim V32.1A  Deluge Valve Conventional Trim Model E-1/E-2 V25.4B  Flow Control Valve Trim Model H-1/H-2 V25.5A1 	Brass 3" / DN80	11428	1,329.48
	4" / DN100	11429	1,551.39
	6" / DN150	11430	1,627.98
	8" / DN200	11431	1,627.98
	3" / DN80	11432	1,376.60
	4" / DN100	11433	1,629.95
	6" / DN150	11434	1,663.34
	8" / DN200	11435	1,663.34
	Brass	08220	109.80
	Rated to 250 psi		
Brass			
1½" / DN40	14629-2	3,615.13	
2" / DN50	14630-2	3,352.75	
3" / DN80	14631-2	3,433.47	
4" / DN100	14632-2	3,668.71	
6" / DN150	14633-2	3,711.04	
Rated to 250 psi			
Brass			
1½" / DN40	14702-2	2,787.98	
2" / DN50	14703-2	2,598.21	
3" / DN80	14704-2	2,668.63	
4" / DN100	14705-2	2,920.55	
6" / DN150	14706-2	2,952.31	

RELEASE TRIM PACKAGES			
Use with Conventional Trim			
Electric	Brass	10832	204.63
Electric/Pneumatic	Brass	12661-2	275.85
Pneumatic	Brass	10811	192.09

V25.5B1

Foam Concentrates

Aqueous Film-Forming Foam (AFFF)

IPG V32.1



Part Number	Description	Gallons/Container	Shipping Weight*	List Price*
F14969/5	1% AFFF Concentrate	5 gal	43 lbs	\$406.99
F14969/55	1% AFFF Concentrate	55 gal	470 lbs	\$4,359.85
F14970/5	3% AFFF Concentrate	5 gal	43 lbs	\$153.70
F14970/55	3% AFFF Concentrate	55 gal	470 lbs	\$1,616.33
F14970/275	3% AFFF Concentrate	275 gal tote	2340 lbs	\$8,453.88
F14971/5	3% AFFF Concentrate Mil Spec.	5 gal	43 lbs	\$253.28
F14971/55	3% AFFF Concentrate Mil Spec.	55 gal	470 lbs	\$2,615.92
F14971/275	3% AFFF Concentrate Mil Spec.	275 gal tote	2340 lbs	\$13,930.29

* Per container

Alcohol-Resistant Aqueous Film-Forming Foam (AR-AFFF)

IPG V32.1



Part Number	Description	Gallons/Container	Shipping Weight*	List Price*
F14972/5	3% AR-AFFF Concentrate	5 gal	43 lbs	\$290.02
F14972/55	3% AR-AFFF Concentrate	55 gal	470 lbs	\$3,083.81
F14972/275	3% AR-AFFF Concentrate	275 gal tote	2340 lbs	\$15,950.71
F14973/5	3% - 6% AR-AFFF Concentrate	5 gal	43 lbs	\$207.84
F14973/55	3% - 6% AR-AFFF Concentrate	55 gal	470 lbs	\$2,179.93

* Per container

High-Expansion Foam

IPG V32.1



Part Number	Description	Gallons/Container	Shipping Weight*	List Price*
F14974/5	2% High Expansion	5 gal	43 lbs	\$291.95
F14974/55	2% High Expansion	55 gal	470 lbs	\$3,051.91
F14974/275	2% High Expansion	275 gal tote	2340 lbs	\$16,057.06
F14975/5	2% XTRA High Ex (no UL listing)	5 gal	43 lbs	\$193.34
F14975/55	2% XTRA High Ex (no UL listing)	55 gal	470 lbs	\$2,020.42
F14975/330	2% XTRA High Ex (no UL listing)	275 gal tote	2340 lbs	\$10,633.81

* Per container

ACCESSORIES - Foam Systems

Pressure Operated Relief Valve (PORV) - Model D-1



1/2" / DN15
Brass
13598 \$916.23

IPG V28

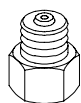
Pressure Operated Relief Valve (PORV) - Model D-2



1/2" / DN15
Corrosion Resistant
13858 \$1,409.59

IPG V28

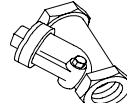
1/8" / 3mm Restricted Orifice



1/2" / DN15
06555A \$20.85

IPG V25.1

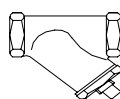
Soft Seat Check Valve



1/2" / DN15
03945A \$62.05

IPG V25.1

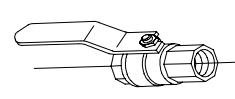
Y Strainer



1/2" / DN15
01054A \$79.54

IPG V25.1

Ball Valve



1/2" / DN15
10355 \$33.94

IPG V25.1

Concentrate Control Valve - Priming Connection Package

Includes:

- 1/8" Restricted Orifice 10985
- Model D-1 PORV \$608.90
- Soft Seat Check Valve
- Ball Valve
- Y Strainer

ACCESSORIES - Foam Systems (continued)

Description	Size	Part Number	List Price
Bladder Tank Water Supply Control Valve (IPG V32)			
Thd Butterball® Valve w/ Switches	2" / DN50	BBSC202-0200	\$548.73
Ball Valve	1½" / DN40	WBV-0150	\$85.06
Ball Valve	2" / DN50	WBV-0200	\$128.64
OS & Y	2½" / DN65	8068A-0250	\$765.92
OS & Y	3" / DN80	8068A-0300	\$827.63
* Butterball® is a registered trademark of Milwaukee Valve Co.			
Foam Concentrate Swing Check Valve (IPG V32)			
Swing Check Valve	1½" / DN40	99S-0150	\$108.08
Swing Check Valve	2" / DN50	99S-0200	\$127.37
Swing Check Valve	2½" / DN65	05497C	\$378.36
Foam Solution Test Valve (IPG V32)			
Grooved Butterfly Valve	2½" / DN65	01G-0250	\$737.25
Grooved Butterfly Valve	3" / DN80	01G-0300	\$798.56
Grooved Butterfly Valve	4" / DN100	01G-0400	\$829.73
Grooved Butterfly Valve	6" / DN150	01G-0600	\$1,246.43
Grooved Butterfly Valve	8" / DN200	01G-0800	\$1,838.68
System Isolation Valve (IPG V32)			
Grooved Butterfly Valve	2½" / DN65	01G-0250	\$737.25
Grooved Butterfly Valve	3" / DN80	01G-0300	\$798.56
Grooved Butterfly Valve	4" / DN100	01G-0400	\$829.73
Grooved Butterfly Valve	6" / DN150	01G-0600	\$1,246.43
Grooved Butterfly Valve	8" / DN200	01G-0800	\$1,838.68
Water Supply Control Valve (IPG V32)			
OS & Y Valve	2½" / DN65	8068A-0250	\$765.92
OS & Y Valve	3" / DN80	8068A-0300	\$827.63
OS & Y Valve	4" / DN100	8068A-0400	\$990.03
OS & Y Valve	6" / DN150	8068A-0600	\$1,406.71
OS & Y Valve	8" / DN200	8068A-0800	\$2,300.57
Foam Concentrate Shut-Off Valve (IPG V32)			
Ball Valve	1½" / DN40	T595Y66-0150	\$385.55
Ball Valve	2" / DN50	T595Y66-0200	\$629.48

Hi-Expansion Foam Generators

Hi-Expansion Foam Generators			IPG V32
Part Number	Description	List Price	
F15104	1500 CFM HI-EX GENERATOR	\$9,705.76	
F15105	3000 CFM HI-EX Generator	\$10,150.45	
F15106	6000 CFM HI-EX Generator	\$12,153.48	
F15107	12000 CFM HI-EX Generator	\$16,642.88	
F15108	15000 CFM HI-EX Generator	\$18,862.45	
F15109	18000 CFM HI-EX Generator	\$16,859.43	
F15110	25000 CFM HI-EX Generator	\$21,151.61	





Foam Bladder Tanks

Vertical Bladder Tanks			Horizontal Bladder Tanks		
IPG V32			IPG V32		
Capacity	Part Number	List Price	Capacity	Part Number	List Price
25 Gallon	CVBT2-25	\$13,216.85	<i>not available</i>		
36 Gallon	CVBT2-36	\$14,063.69	<i>not available</i>		
50 Gallon	CVBT2-50	\$16,534.60	50 Gallon	CHBT2-50	\$18,367.49
75 Gallon	CVBT-75	\$17,849.33	75 Gallon	CHBT2-75	\$19,256.85
100 Gallon	CVBT2-100	\$18,560.83	100 Gallon	CHBT2-100	\$21,766.44
150 Gallon	CVBT2-150	\$21,488.02	150 Gallon	CHBT2-150	\$26,356.37
200 Gallon	CVBT2-200	\$22,640.34	200 Gallon	CHBT2-200	\$27,558.96
250 Gallon	CVBT2-250	\$25,331.66	250 Gallon	CHBT2-250	\$30,014.41
300 Gallon	CVBT2-300	\$25,733.82	300 Gallon	CHBT2-300	\$30,300.55
350 Gallon	CVBT2-350	\$26,333.18	350 Gallon	CHBT2-350	\$29,054.50
400 Gallon	CVBT2-400	\$26,932.53	400 Gallon	CHBT2-400	\$31,151.26
450 Gallon	CVBT2-450	\$28,916.23	450 Gallon	CHBT2-450	\$33,765.24
500 Gallon	CVBT2-500	\$35,478.25	500 Gallon	CHBT2-500	\$40,485.81
600 Gallon	CVBT2-600	\$35,648.38	600 Gallon	CHBT2-600	\$40,915.02
700 Gallon	CVBT2-700	\$36,328.96	700 Gallon	CHBT2-700	\$41,344.24
800 Gallon	CVBT2-800	\$41,556.92	800 Gallon	CHBT2-800	\$44,855.33
900 Gallon	CVBT2-900	\$41,939.74	900 Gallon	CHBT2-900	\$46,084.98
1000 Gallon	CVBT2-1000	\$45,300.02	1000 Gallon	CHBT2-1000	\$48,888.45
1100 Gallon	CVBT2-1100	\$49,831.97	1100 Gallon	CHBT2-1100	\$57,383.90
1200 Gallon	CVBT2-1200	\$50,203.17	1200 Gallon	CHBT2-1200	\$57,801.52
1300 Gallon	CVBT2-1300	\$53,459.05	1300 Gallon	CHBT2-1300	\$61,014.86
1400 Gallon	CVBT2-1400	\$53,772.27	1400 Gallon	CHBT2-1400	\$61,328.08
1500 Gallon	CVBT2-1500	\$57,770.58	1500 Gallon	CHBT2-1500	\$62,171.05
1600 Gallon	CVBT2-1600	\$64,417.67	1600 Gallon	CHBT2-1600	\$71,888.42
1700 Gallon	CVBT2-1700	\$64,649.69	1700 Gallon	CHBT2-1700	\$72,112.68
1800 Gallon	CVBT2-1800	\$65,156.24	1800 Gallon	CHBT2-1800	\$72,623.10
1900 Gallon	CVBT2-1900	\$69,916.33	1900 Gallon	CHBT2-1900	\$77,414.12
2000 Gallon	CVBT2-2000	\$71,231.05	2000 Gallon	CHBT2-2000	\$77,665.47
2100 Gallon	CVBT2-2100	\$89,958.15	2100 Gallon	CHBT2-2100	\$99,072.30
2200 Gallon	CVBT2-2200	\$91,682.76	2200 Gallon	CHBT2-2200	\$100,796.89
2300 Gallon	CVBT2-2300	\$93,546.58	2300 Gallon	CHBT2-2300	\$102,687.79
2400 Gallon	CVBT2-2400	\$95,317.59	2400 Gallon	CHBT2-2400	\$104,594.13
2500 Gallon	CVBT2-2500	\$100,870.37	2500 Gallon	CHBT2-2500	\$106,504.36
2600 Gallon	CVBT2-2600	\$102,722.60	2600 Gallon	CHBT2-2600	\$110,096.65
2700 Gallon	CVBT2-2700	\$102,962.33	2700 Gallon	CHBT2-2700	\$110,332.53
2800 Gallon	CVBT2-2800	\$106,380.61	2800 Gallon	CHBT2-2800	\$113,658.00
2900 Gallon	CVBT2-2900	\$108,244.43	2900 Gallon	CHBT2-2900	\$115,440.63
3000 Gallon	CVBT2-3000	\$108,449.38	3000 Gallon	CHBT2-3000	\$119,930.02
3100 Gallon	CVBT2-3100	\$110,328.66	3100 Gallon	CHBT2-3100	\$121,805.45
3200 Gallon	CVBT2-3200	\$112,091.94	3200 Gallon	CHBT2-3200	\$123,541.65
3300 Gallon	CVBT2-3300	\$113,855.21	3300 Gallon	CHBT2-3300	\$125,331.99
3400 Gallon	CVBT2-3400	\$115,761.57	3400 Gallon	CHBT2-3400	\$127,242.22
3500 Gallon	CVBT2-3500	\$117,613.78	3500 Gallon	CHBT2-3500	\$129,148.57
3600 Gallon	CVBT2-3600	\$120,015.10	3600 Gallon	CHBT2-3600	\$132,029.36
3700 Gallon	CVBT2-3700	\$121,747.43	3700 Gallon	CHBT2-3700	\$133,800.38
3800 Gallon	CVBT2-3800	\$123,572.58	3800 Gallon	CHBT2-3800	\$135,586.86
3900 Gallon	CVBT2-3900	\$125,390.01	3900 Gallon	CHBT2-3900	\$137,555.08
4000 Gallon	CVBT2-4000	\$127,238.34	4000 Gallon	CHBT2-4000	\$139,256.49
4100 Gallon	CVBT2-4100	\$129,090.56	4100 Gallon	CHBT2-4100	\$141,112.57
4200 Gallon	CVBT2-4200	\$130,942.78	4200 Gallon	CHBT2-4200	\$142,960.93
4300 Gallon	CVBT2-4300	\$132,756.33	4300 Gallon	CHBT2-4300	\$144,778.33
4400 Gallon	CVBT2-4400	\$134,546.68	4400 Gallon	CHBT2-4400	\$146,622.81
4500 Gallon	CVBT2-4500	\$136,402.76	4500 Gallon	CHBT2-4500	\$148,405.43

* Bladder tank assemblies include water drain/fill valve, fill line master shut-off valve, concentrate drain/fill valve, fill cup, sight gauge shut-off valve, sight gauge assembly, tank water vent valve, and diaphragm concentrate vent valve.

Proportioning Devices

In-Line Eductors

IPG V32



Part Number	Description	List Price
F09349	60 GPM, 3% Handline	\$1,391.02
F09350	60 GPM, 6% Handline	\$1,391.02
F09510	60 GPM, 1%,Handline	\$1,391.02
F09181	98 GPM, 3% Handline	\$1,391.02
F09184	98 GPM, 6% Handline	\$1,391.02
F09511	98 GPM, 1%,Handline	\$1,391.02
F14976	95 GPM handline eductor NST Threads	\$1,392.06
F14977	95 GPM handline eductor NPSH Threads	\$1,392.06
F14978	60 gpm Handline eductor 1.5 NST Thread	\$1,392.06
F14979	60 gpm Handline eductor 1.5 NPSH Thread	\$1,392.06

F14980	Pickup Tube Assembly	\$43.77
--------	----------------------	---------

Line Proportioners

IPG V32




Part Number	Description	List Price
F14983	Line proportioner K factor water 9.2	\$3,426.02
F14984	Line proportioner K factor water 16.1	\$3,426.02
F14985	Line proportioner K factor water 18.4	\$3,426.02
F14986	Line proportioner K factor water 21.5	\$3,426.02
F14987	Line proportioner K factor water 26.9	\$3,426.02
F14988	Line proportioner K factor water 32.2	\$3,917.10
F14989	Line proportioner K factor water 36.8	\$3,917.10
F14990	Line proportioner K factor water 42.2	\$3,917.10
F14991	Line proportioner K factor water 46.1	\$4,651.80
F14992	Line proportioner K factor water 50.7	\$4,651.80
F14993	Line proportioner K factor water 56.0	\$4,651.80

In-Line Balanced Proportioners (ILBPs)


IPG V32

Part Number	Description	List Price
F15006A	2.5" THD ILBP, 1% AFFF C103, balance valve 1-1/4" orifice (not listed)	\$7,826.48
F15006B	2.5" THD ILBP, 3% AFFF C303, balance valve 1-1/4" orifice .250 (not listed)	\$7,826.48
F15006C	2.5" THD ILBP, 3% AFFF C301MS, balance valve 1-1/4" orifice .250 (not listed)	\$7,826.48
F15006J	2.5" THD ILBP, 3% AR/AFFF CUG, balance valve 1-1/4" orifice .277 (not listed)	\$7,826.48
F15012A	3" Wafer ILBP, 1% AFFF C103, BV, 1-1/4" .200/.25 orifice (113-836) UL/FM	\$8,510.92
F15012B	3" Wafer ILBP, 3% AFFF C303, BV 1-1/4" orifice .370/.25 (104-750) UL/FM	\$8,510.92
F15012C	3" Wafer ILBP, 3% AFFF C301, BV 1-1/4" orifice .370/.25 (105-853) UL/FM	\$8,510.92
F15012J	3" Wafer ILBP, 3% AR/AFFF CUG, BV 1-1/4" orifice .370/.38 (203-783) UL/FM	\$8,510.92
F15012D	3" Wafer ILBP, 3% AR/AFFF C363, BV 1-1/4" orifice .370/.38 (113-791) UL/FM	\$8,510.92
F15012E	3" Wafer ILBP, 6% AR/AFFF C363, BV 1-1/4" orifice .522/.38 (219-739) UL/FM	\$8,510.92
F15012H	3" Wafer ILBP, 2% C2 VEE HI EX,, BV 1-1/4" orifice .272/.25 (160-771) UL/FM	\$8,510.92
F15018A	4" Wafer ILBP, 1% AFFF C103, BV 1-1/2" orifice .289/.38 (176-1817) UL/FM	\$9,098.67
F15018B	4" Wafer ILBP, 3% AFFF C303, BV 1-1/2" orifice .485/.38 (296-1335) UL/FM	\$9,098.67
F15018C	4" Wafer ILBP, 3% AFFF C301MS, BV 1-1/2" orifice .485/.38 (143-1456) UL/FM	\$9,098.67
F15018J	4" Wafer ILBP, 3% AR/AFFF CUG, BV 1-1/2" orifice .485/.5 (146-1450) UL/FM	\$9,098.67
F15018J	4" Wafer ILBP, 3% AR/AFFF C363, BV 1-1/2" orifice .485/.5 (259-1207) UL/FM	\$9,098.67
F15018J	4" Wafer ILBP, 6% AR/AFFF C363, BV 1-1/2" orifice .674/.5 (314-1148) UL/FM	\$9,098.67
F15018H	4" Wafer ILBP, 2% C2 VEE HI EX, BV 1-1/2" orifice .389/.5 (292-1223) UL/FM	\$9,098.67
F15025A	6" Wafer ILBP, 1% AFFF C103, BV, 2" orifice .390/.75 (334-3000) UL/FM	\$11,527.04
F15025B	6" Wafer ILBP, 3% AFFF C303, BV, 2" orifice .670/.5 (297-3049) UL/FM	\$11,527.04
F15025C	6" Wafer ILBP, 3% AFFF C301MS, BV, 2" orifice .670/.5 (321-2809) UL/FM	\$11,527.04
F15025H	6" Wafer ILBP, 2% C2 VEE HI Ex 2" bal vlv, orifice 0.485 (750-3000) (Not Listed)	\$11,527.04
F15025J	6" Wafer ILBP, 3% AR/AFFF CUG, BV 2" orifice .760/.75 (457-2977) UL/FM	\$11,527.04
F15032A	8" Wafer ILBP, 1% AFFF C103, BV, 2" orifice .562/.75 (800-3279) UL/FM	\$15,111.60
F15032B	8" Wafer ILBP, 3% AFFF C303, BV 2" orifice .950/.5 (921-3276)	\$15,111.60
F15032C	8" Wafer ILBP, 3% AFFF C301MS, BV 2" orifice .950/.5 (931-3356)	\$15,111.60
F15032J	8" Wafer ILBP, 3% AR/AFFF CUG, BV 2" orifice .950/.75 (929-3327)	\$15,111.60

Proportioning Devices (continued)

Concentrate Controllers		IPG V32
Part Number	Description	List Price
	F15001A 2.5" Thd Controller, 1% AFFF C103 *	\$1,252.86
	F15001B 2.5" Thd Controller, 3% AFFF C303, 0.252 orif (34-440)	\$1,252.86
	F15001C 2.5" Thd Controller, 3% AFFF C301MS, Mil Spec. 0.252 orif (40-400)	\$1,252.86
	F15001J 2.5" Thd Controller, 3% AR-AFFF CUG, 0.271/.25 orif (104--382)	\$1,252.86
	F15002 2.5" Thd Controller, 6% AFFF C603 *	\$1,252.86
	F15001D 2.5" Thd Controller, 3/6 AR/AFFF C363, 3%, .252 orif (144-402)	\$1,252.86
	F15001E 2.5" Thd Controller, 3/6 AR/AFFF C363, 6%, .365/.38 orif (124-338)	\$1,252.86
	F15001H 2.5" Thd Controller, 2% C2 VEE Hi Ex Foam orif, (124-249)	\$1,252.86
	F15007A 3" Wafer Controller, 1% AFFF C103, orif .200/.25 (76-778)	\$1,492.61
	F15007B 3" Wafer Controller, 3% AFFF C303, 0.365 orif (24-772)	\$1,492.61
F15007C 3" Wafer Controller, 3% AFFF C301, Mil Spec. 0.365 orif (22-776)	\$1,492.61	
F15007J 3" Wafer Controller, 3% AR-AFFF CUG, 0.380/.195 orif (207-820)	\$1,492.61	
F15008 3" Wafer Controller, 6% AFFF C603 *	\$1,492.61	
F15007D 3" Wafer Controller, 3/6 AR/AFFF C363, 3%, .365/.38 orif (194-753)	\$1,492.61	
F15007E 3" Wafer Controller, 3/6 AR/AFFF C363, 6%, .495/.38 orif (196-755)	\$1,492.61	
F15007H 3" Wafer Controller, 2% C2 VEE Hi Ex Foam .292 orif, (165-779)	\$1,492.61	
F15013A 4" Wafer Controller, 1% AFFF C103, orif .265/.5 (101-1480)	\$1,902.48	
F15013B 4" Wafer Controller, 3% AFFF C303, 0.485/.265 orif (22-1400)	\$1,902.48	
F15013C 4" Wafer Controller, 3% AFFF C301MS, Mil Spec. 0.485/.265 orif (53-1389)	\$1,902.48	
F15013J 4" Wafer Controller, 3% AR-AFFF CUG, .506/.265 orif (410-1500)	\$1,902.48	
F15014 4" Wafer Controller, 6% AFFF C603 *	\$1,902.48	
F15013D 4" Wafer Controller, 3/6 AR/AFFF C363, 3%, .485/.5 orif (297-1334)	\$1,902.48	
F15013E 4" Wafer Controller, 3/6 AR/AFFF C363, 6%, .674/.5 orif (394-1379)	\$1,902.48	
F15013H 4" Wafer Controller, 2% C2 VEE Hi Ex Foam .389 orif, (395-1100)	\$1,902.48	
F15019A 6" Wafer Controller, 1% AFFF C103, orif .385/.5 (147-2851)	\$2,784.12	
F15019B 6" Wafer Controller, 3% AFFF C303, 0.700/.50 orif (23-3195)	\$2,784.12	
F15019C 6" Wafer Controller, 3% AFFF C301MS, Mil Spec. 0.700/.50 orif (100-3238)	\$2,784.12	
F15019J 6" Wafer Controller, 3% AR-AFFF CUG, .785 x .75thk orif (681-3188)	\$2,784.12	
F15021 6" Wafer Controller, 6% AFFF C603 *	\$2,784.12	
F15022 6" Wafer Controller, 3/6 AR/AFFF C361, 3%, .755 orif (880-2875)	\$2,784.12	
F15023 6" Wafer Controller, 3/6 AR/AFFF C361, 6%, 1.120 orif (2000-3019)	\$2,784.12	
F15019H 6" Wafer Controller, 2% C2 VEE Hi Ex Foam .538 orif, (810-2670)	\$2,784.12	
F15026A 8" Wafer Controller, 1% AFFF C103, orif .525/.75 (312-3223)	\$4,307.66	
F15026B 8" Wafer Controller, 3% AFFF C303, 0.975/.75 orif (88-3899)	\$4,307.66	
F15026C 8" Wafer Controller, 3% AFFF C301MS, Mil Spec. 0.975/.75 orif (52-3943)	\$4,307.66	
F15026J 8" Wafer Controller, 3% AR-AFFF CUG, 1.12/.75 orif (1158-3256)	\$4,307.66	
F15028 8" Wafer Controller, 6% AFFF C603 *	\$4,307.66	
F15026D 8" Wafer Controller, 3/6 AR/AFFF C363, 3% *	\$4,307.66	
F15026E 8" Wafer Controller, 3/6 AR/AFFF C363, 6% *	\$4,307.66	
F15026H 8" Wafer Controller, 2% C2 VEE Hi Ex Foam *	\$4,307.66	

* Not listed or approved.

Wide Range Proportioners		IPG V32
Part Number	Description	List Price
	F15020A 6" FLGD Proportioner (20-2500) 1% C103	\$8,994.27
	F15020B 6" FLGD Proportioner (20-2500) 3% C303	\$8,994.27
	F15020C 6" FLGD Proportioner (20-2500) 3% C301MS	\$8,994.27
	F15020J 6" FLGD Proportioner (20-2500) CUG 3%	\$8,994.27
	F15020H 6" FLGD Proportioner (20-2500) C2 VEE Hi Ex	\$8,994.27

Discharge Devices

Viking Grate Nozzle®

IPG V32



Part Number	Description	List Price
F02012	360° Pattern - Grooved - 26" Grate Nozzle*	\$4,488.45
F02022	360° Pattern - Grooved - 20" Grate Nozzle*	\$4,488.45
F13689	180° Pattern - Grooved - 26" Grate Nozzle*	\$4,488.45
F13690	180° Pattern - Grooved - 20" Grate Nozzle*	\$4,488.45
F13686	90° Pattern - Grooved - 26" Grate Nozzle*	\$4,488.45
F13687	90° Pattern - Grooved - 20" Grate Nozzle*	\$4,488.45

* 11 inch width

Handline Nozzles

IPG V32



Part Number	Description	List Price
F15033	1-1/2 NH, Brass, Pistol Grip	\$1,384.33
F15034	1-1/2 NPSH, Brass, Pistol Grip	\$1,384.33
F15035	15.5 Lg Foam Tube	\$564.57

Monitor Nozzles, Non Aspirated

IPG V32



Part Number	Description	List Price
F15036	300 gpm constant flow fog nozzle, brass	\$1,194.85
F15037	350 gpm constant flow fog nozzle, brass	\$1,194.85
F15038	500 gpm constant flow fog nozzle, brass	\$1,194.85
F15039	700 gpm constant flow fog nozzle, brass	\$1,194.85
F15040	750 gpm constant flow fog nozzle, brass	\$1,194.85
F15041	1000 gpm constant flow fog nozzle, brass	\$1,825.15
F15042	Adj fog nozzle, 500-750-1000-1250 Chemlite, 2-1/2	\$1,964.35
F15043	Adj fog nozzle, 500-750-1000-1250 Brass, 2-1/2	\$3,085.73

Self-Educting Foam Nozzles

IPG V32



Part Number	Description	List Price
F15044	Self educating monitor nozzle 3/6% AFFF/AR-AFFF	\$3,538.16
F15045	Self educating monitor nozzle 3 % AFFF/AR-AFFF	\$3,538.16
F15046	Self educating monitor nozzle 3% AFFF/AR-AFFF	\$3,124.41
F15047	Self educating monitor nozzle w/ (6) meters AFFF/AR-AFFF	\$4,338.60

Hose Reel Assemblies

IPG V32



Part Number	Description	List Price
F15353	1-1/2" 50' hard rubber hose, w/ SB95P nozzle	\$7,176.86
F15354	1-1/2" 75' hard rubber hose, w/ SB95P nozzle	\$7,416.60
F15355	1-1/2" 100' hard rubber hose, w/ SB95P nozzle	\$7,652.48
F15356	1-1/2" 125' hard rubber hose, w/ SB95P nozzle	\$8,464.50
F15357	1-1/2" 150' hard rubber hose, w/ SB95P nozzle	\$8,882.12
F15358	1-1/2" 175' hard rubber hose, w/ SB95P nozzle	\$9,295.88
F15359	1-1/2" 200' hard rubber hose, w/ SB95P nozzle	\$9,713.50

Discharge Devices (continued)

Oscillating Monitors		IPG V32
Part Number	Description	List Price
F15050	350 GPM Water Powered Oscillating Monitor	\$11,971.74
F15051	500 GPM Water Powered Oscillating Monitor	\$11,971.74
F15052	750 GPM Water Powered Oscillating Monitor	\$11,971.74
F15316	1000 GPM Water Powered Oscillating Monitor	\$11,971.74
F15053	1250 GPM Water Powered Oscillating Monitor	\$12,555.63
F15317	1300 GPM Water Powered Oscillating Monitor	\$16,151.79
F15318	1400 GPM Water Powered Oscillating Monitor	\$16,151.79
F15319	1500 GPM Water Powered Oscillating Monitor	\$16,151.79
F15320	1600 GPM Water Powered Oscillating Monitor	\$16,151.79
F15321	1700 GPM Water Powered Oscillating Monitor	\$16,151.79
F15322	1800 GPM Water Powered Oscillating Monitor	\$16,151.79
F15323	1900 GPM Water Powered Oscillating Monitor	\$16,151.79
F15054	2000 GPM Water Powered Oscillating Monitor	\$16,151.79



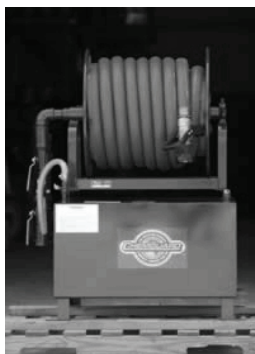
Fixed Monitors		IPG V32
Part Number	Description	List Price
F15059	Hand wheel monitor, 3" inlet x 3" waterway x 2.5 outlet	\$3,847.50
F15060	Hand wheel monitor, 4" inlet x 3" waterway x 2.5 outlet	\$3,847.50
F15061	3" waterway, 3" flgd inlet, 2.5" outlet single waterway	\$3,766.31
F15062	3" waterway, 4" flgd inlet, 2.5" outlet single waterway	\$3,766.31
F15063	4" waterway, 4" flgd, 3.5" outlet single waterway	\$7,946.35
F15064	4" waterway, 4" flgd, 3.5" outlet single waterway, hyd mount	\$8,363.97



Foam Carts		IPG V32
Part Number	Description	List Price
F15332	36 gal foam cart w/ 1-1/2" 50' hose, 95 gpm eductor/nozzle	\$6,770.85
F15333	36 gal foam cart with 95 gpm eductor, no hose or nozzle	\$5,158.36
F15334	Red vinyl cover	\$1,426.87
F15335	Additional 1-1/2" x 50' hose	\$301.61



Fixed Foam Hose Reel Stations (USCG Approved)		IPG V32
Part Number	Description	List Price
F15336	36 gal 3% AFFF USCG approved	\$10,745.95
F15337	60 gal foam w/ SS tank and galv hose reel	\$17,795.20
F15338	60 gal w/ 100' 1-1/2" hose w/ standard nozzle-3% AFFF, NPSH	\$17,729.46
F15339	60 gal w/ 100' 1-1/2" hose w/ pistol grip nozzle-3% AFFF, NPSH	\$18,116.14
F15340	60 gal w/ 100' 1-1/2" hose w/ standard nozzle-3% AFFF, NST	\$18,116.14
F15341	60 gal w/ 100' 1-1/2" hose w/ pistol grip nozzle-3% AFFF, NST	\$18,116.14
F15342	60 gal w/ 100' 1-1/2" hose w/ standard nozzle-3% AR-AFFF, NPSH	\$18,116.14
F15343	60 gal w/ 100' 1-1/2" hose w/ pistol grip nozzle-3% AR-AFFF, NPSH	\$18,116.14
F15344	60 gal w/ 100' 1-1/2" hose w/ standard nozzle-3% AR-AFFF, NST	\$18,116.14
F15345	60 gal w/ 100' 1-1/2" hose w/ pistol grip nozzle-3% AR-AFFF, NST	\$18,116.14



Discharge Devices (continued)

Foam Chambers		IPG V32	
Part Number	Description	List Price	
	F15065	2-1/2" Foam chamber 58-177 GPM	\$2,405.17
	F15066	2-1/2 Solid deflector	\$371.22
	F15067	2-1/2 Split deflector	\$421.49
	F15068	2-1/2 Mounting pad with studs	\$189.48
	F15069	Vapor seal assembly	\$92.80
	F15070	3" Foam chamber 101-292 GPM	\$2,602.38
	F15071	3' Solid deflector	\$394.42
	F15072	3" Split deflector	\$421.49
	F15073	3" Mounting pad with studs	\$243.62
	F15074	Vapor seal assembly	\$105.95
F15075	4" Foam chamber 180-642 GPM	\$2,954.26	
F15076	4' Solid deflector	\$421.49	
F15077	4" Split deflector	\$421.49	
F15078	4" Mounting pad with studs	\$282.28	
F15079	Vapor seal assembly	\$112.15	
F15080	6" Foam chamber 540-1090 GPM	\$4,156.85	
F15081	6' Solid deflector	\$448.55	
F15082	6" Split deflector	\$479.49	
F15083	6" Mounting pad with studs	\$282.28	
F15084	Vapor seal assembly	\$127.60	

Foam Makers		IPG V32	
Part Number	Description	List Price	
	F15085	1-1/2 Foam maker w/ K factor 0.6, 5- 35 GPM	\$599.37
	F15086	1-1/2 Foam maker w/ K factor 0.8, 5- 35 GPM	\$599.37
	F15087	1-1/2 Foam maker w/ K factor 1.0, 5- 35 GPM	\$599.37
	F15088	1-1/2 Foam maker w/ K factor 1.5, 5- 35 GPM	\$599.37
	F15089	1-1/2 Foam maker w/ K factor 2.0, 5- 35 GPM	\$599.37
	F15090	1-1/2 Foam maker w/ K factor 2.5, 5- 35 GPM	\$599.37
	F15091	1-1/2 Foam maker w/ K factor 3.0, 5- 35 GPM	\$599.37
	F15092	1-1/2 Foam Maker w/ K factor 4.5, 30 - 150 GPM	\$576.16
	F15093	1-1/2 Foam Maker w/ K factor 6.0, 30 - 150 GPM	\$576.16
	F15094	1-1/2 Foam Maker w/ K factor 6.8, 30 - 150 GPM	\$583.89
	F15095	1-1/2 Foam Maker w/ K factor 8.0, 30 - 150 GPM	\$576.16
	F15096	1-1/2 Foam Maker w/ K factor 10.0, 30 - 150 GPM	\$576.16
	F15097	1-1/2 Foam Maker w/ K factor 12.0, 30 - 150 GPM	\$576.16
	F15098	2-1/2 Foam Maker w/ K factor 14.0, 90 - 295 GPM	\$908.71
	F15099	2-1/2 Foam Maker w/ K factor 16.3, 90 - 295 GPM	\$908.71
	F15100	2-1/2 Foam Maker w/ K factor 18.0, 90 - 295 GPM	\$908.71
	F15101	2-1/2 Foam Maker w/ K factor 20.0, 90 - 295 GPM	\$908.71
	F15102	2-1/2 Foam Maker w/ K factor 22.0, 90 - 295 GPM	\$908.71
	F15103	2-1/2 Foam Maker w/ K factor 24.0, 90 - 295 GPM	\$908.71

Atmospheric Storage Tanks and Accessories

Atmospheric Storage Tanks		IPG V32
Part Number	Description	List Price
F15360	100 Gallon Atmospheric Storage Tank	\$4,899.29
F15361	205 Gallon Atmospheric Storage Tank	\$5,266.64
F15362	300 Gallon Atmospheric Storage Tank	\$6,055.47
F15363	400 Gallon Atmospheric Storage Tank	\$6,531.09
F16256	540 Gallon Atmospheric Storage Tank	\$7,318.61
F15364	615 Gallon Atmospheric Storage Tank	\$9,675.15
F15365	805 Gallon Atmospheric Storage Tank	\$10,858.09
F15366	905 Gallon Atmospheric Storage Tank	\$10,970.23
F15367	1000 Gallon Atmospheric Storage Tank	\$12,091.61
F15368	1150 Gallon Atmospheric Storage Tank	\$13,561.00
F15370	1400 Gallon Atmospheric Storage Tank	\$16,167.26
F15371	1550 Gallon Atmospheric Storage Tank	\$15,281.74
F15372	1700 Gallon Atmospheric Storage Tank	\$18,529.89
F15373	2000 Gallon Atmospheric Storage Tank	\$20,385.98
F16257	2250 Gallon Atmospheric Storage Tank	POA
F15375	2550 Gallon Atmospheric Storage Tank	\$23,313.17
F16258	2650 Gallon Atmospheric Storage Tank	POA
F15377	3000 Gallon Atmospheric Storage Tank	\$26,824.26
F16259	3650 Gallon Atmospheric Storage Tank	\$27,103.35
F16260	3900 Gallon Atmospheric Storage Tank	\$29,072.25
F16261	4250 Gallon Atmospheric Storage Tank	\$28,192.45
F16262	4925 Gallon Atmospheric Storage Tank	\$27,145.92
F16263	5050 Gallon Atmospheric Storage Tank	\$39,938.42
F16264	5300 Gallon Atmospheric Storage Tank	\$35,386.90
F16265	6100 Gallon Atmospheric Storage Tank	\$41,843.46
F16266	7300 Gallon Atmospheric Storage Tank	\$41,431.94

Accessory Items		IPG V32
Part Number	Description	List Price

Tank Suction Connection - Stainless Steel

F15378	1-1/2" Stainless Steel Flgd Tank Conn.	\$2,250.50
F15379	2" Stainless Steel Flgd Tank Conn.	\$2,563.72
F15380	3" Stainless Steel Flgd Tank Conn.	\$3,495.63
F15381	4" Stainless Steel Flgd Tank Conn.	\$4,814.21

Tank Return Connection - Stainless Steel

F15382	1-1/2" Stainless Steel Flgd Tank Conn.	\$2,250.50
F15383	2" Stainless Steel Flgd Tank Conn.	\$2,563.72
F15384	3" Stainless Steel Flgd Tank Conn.	\$3,495.63
F15385	4" Stainless Steel Flgd Tank Conn.	\$4,814.21

Pressure/Vacuum Vent Options

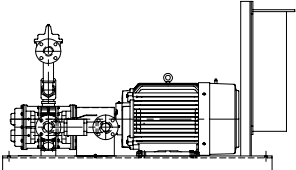
F15386	2" Polypropylene Pressure Vacuum Vent	\$885.51
F15387	2" Stainless Pressure Vacuum Vent	\$1,183.26
F15388	3" Stainless Pressure Vacuum Vent	\$1,550.60

Low Level Switch

F15389	Low Level Switch	\$475.62
--------	------------------	----------

DESCRIPTION	FOAM PSI	HP	PART NUMBER	LIST PRICE (each)
FOAMPAK FOAM PUMP SYSTEM				
<u>Fully Assembled Foam Pump Skid Includes:</u>				
- Pump			- Pump Skid with Coupling Guard	
- Pump Driver			- Panel Support Frame	
- Pump Controller			- Suction Strainer	
- Casing Relief Valve			- UL/FM NamePlates	
- Pressure Sustaining Valve			- Discharge Check Valve	
- Vacuum Gauge			- Suction & Discharge Control Valve	
- Pressure Gauge			- All Piping	
- Duplex Gauge			- Assembled Piping Connections	
60HZ				
Foam Flow 10GPM / 38LPM	100	5	F01935A	POA
	150	5	F01936A	POA
	200	7.5	F01937A	POA
	250	7.5	F01938A	POA
Foam Flow 25GPM / 95LPM	100	7.5	F01939A	POA
	150	10	F01940A	POA
	200	10	F01941A	POA
	250	15	F01942A	POA
Foam Flow 50GPM / 190LPM	100	15	F01943A	POA
	150	15	F01944A	POA
	200	20	F01945A	POA
	250	20	F01946A	POA
Foam Flow 75GPM / 284LPM	100	20	F01947A	POA
	150	25	F01948A	POA
	200	30	F01949A	POA
	250	40	F01950A	POA
Foam Flow 100GPM / 378LPM	100	20	F01951A	POA
	150	25	F01952A	POA
	200	30	F01953A	POA
	250	40	F01954A	POA
Foam Flow 150GPM / 568LPM	100	30	F01955A	POA
	150	40	F01956A	POA
	200	50	F01957A	POA
	250	60	F01958A	POA
Foam Flow 200GPM / 757LPM	100	40	F01959A	POA
	150	50	F01960A	POA
	200	60	F01961A	POA
	250	70	F01962A	POA
Foam Flow 250GPM / 946LPM	100	50	F01963A	POA
	150	60	F01964A	POA
	200	75	F01965A	POA
	250	100	F01966A	POA
Foam Flow 300GPM / 1135LPM	100	60	F01967A	POA
	150	75	F01968A	POA
	200	100	F01969A	POA
	250	100	F01970A	POA
Foam Flow 350GPM / 1325LPM	100	75	F01971A	POA
	150	100	F01972A	POA
	200	100	F01973A	POA
	250	125	F01974A	POA
Foam Flow 400GPM / 1514LPM	100	100	F01975A	POA
	150	100	F01976A	POA
	200	125	F01977A	POA
	250	125	F01978A	POA

V32

DESCRIPTION	FOAM PSI	HP	PART NUMBER	LIST PRICE (each)
<i>Continued . . .</i>				
 50HZ Foam Flow 10GPM / 38LPM	100	5	F01935B	POA
	150	5	F01936B	POA
	200	5	F01937B	POA
	250	7.5	F01938B	POA
Foam Flow 25GPM / 95LPM	100	7.5	F01939B	POA
	150	7.5	F01940B	POA
Foam Flow 50GPM / 190LPM	100	10	F01943B	POA
	150	15	F01944B	POA
	200	15	F01945B	POA
	250	20	F01946B	POA
Foam Flow 75GPM / 284LPM	100	15	F01947B	POA
	150	20	F01948B	POA
	200	25	F01949B	POA
	250	30	F01950B	POA
Foam Flow 100GPM / 378LPM	100	20	F01951B	POA
	150	25	F01952B	POA
	200	40	F01953B	POA
	250	40	F01954B	POA
Foam Flow 200GPM / 757LPM	100	40	F01959B	POA
	150	40	F01960B	POA
	200	50	F01961B	POA
	250	60	F01962B	POA
Foam Flow 250GPM / 946LPM	100	50	F01963B	POA
	150	60	F01964B	POA
	200	75	F01965B	POA
	250	75	F01966B	POA
Foam Flow 350GPM / 1325LPM	100	60	F01971B	POA
	150	100	F01972B	POA
	200	100	F01973B	POA
	250	100	F01974B	POA
Foam Flow 400GPM / 1514LPM	100	100	F01975B	POA
	150	100	F01976B	POA
	200	125	F01977B	POA
See following page for ordering details.				
V32				

DESCRIPTION	ADD TO LIST PRICE (each)
FOAMPAK FOAM PUMP SYSTEM Ordering Details	
<i>Continued. . .</i>	
When Ordering FoamPak Specify the following suffixes	
PUMP VOLTAGE	
A = 220 / 230V	N/C
B = 380 / 415V	N/C
C = 460 / 480V	N/C
D = Diesel Engine	Per Quote
CONTROLLER	
Pump Controllers up to and including 30HP are Limited Service Controllers. Pump Controllers over 30HP are full voltage cross the line disconnect.	
NEMA Rating (For Pumps up to and including 30HP)	
A = NEMA 2	N/C
B = NEMA 3R	970.19
C = NEMA 4	3,406.75
D = NEMA 4X	5,837.77
or	
NEMA Rating (For Pumps over 30HP)	
A = NEMA 2	N/C
B = NEMA 3R	1,850.99
C = NEMA 4	5,837.77
D = NEMA 4X	9,729.65
PUMP ROTATION (Looking at pump input shaft)	
R = "UR" Clockwise	N/C
L = "UL" Counter Clockwise	N/C
CONTROLLER STARTING METHOD	
A = Deluge Switch or Remote Signal	N/C
B = Mercoïd Switch Pressure Drop	1,555.63
Example: 60HZ 10GPM Foam Flow, 100PSI, 5HP, with 240/480V pump, NEMA Rating 2, Clockwise Pump Rotation, with Mercoïd Switch = F01935ADARB	
OPTION:	
Anti-Condensation Space Heater for Controller	
S = 120V 1 Phase	1,467.57
H = 240V 1 Phase	1,467.57
EXPORT CRATING:	
For 10GPM and 25GPM	327.75 NET
For 50GPM and 75GPM	368.69 NET
For 100GPM and 150GPM	450.64 NET
For 200GPM	614.51 NET
For 250GPM	778.36 NET
For 300GPM	1106.10 NET

